

The 18th Regional Geoscience Conference of Southeast Asia :



GEOSEA 2024

GEOSCIENCE FOR SOCIETY

February 20-23, 2024 Pullman Khon Kaen Raja Orchid Hotel,
Khon Kaen, Thailand



THE LAND OF DINOSAURS ROAMING

KHON KAEN

FINAL CIRCULAR
JANUARY 31, 2024

Organizer



Regional Collaborators: AFGEO



HALLIBURTON



The 18th Regional Geoscience Conference of Southeast Asia :



GEOSEA 2024

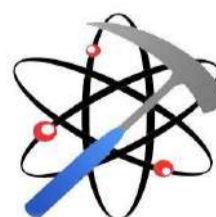
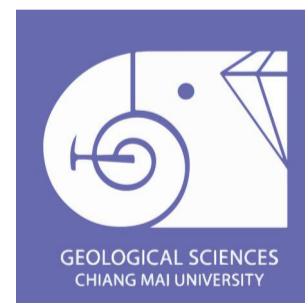
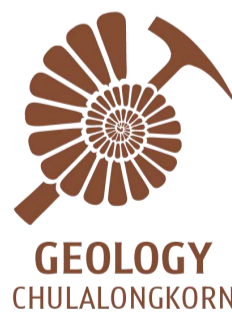
GEOSCIENCE FOR SOCIETY

February 20-23, 2024 Pullman Khon Kaen Raja Orchid Hotel,
Khon Kaen, Thailand

Organizer



Co-organizers



Final Circular, January 31, 2024

GEOSEA 2024 Conference's Theme



**GEOSCIENCE FOR SOCIETY
FEBRUARY 20 - 23, 2024
KHON KAEN, THAILAND**

The 18th Regional Geoscience Conference of Southeast Asia : GEOSEA 2024

The Geological Society of Thailand (GST) in cooperation with geoscience organization colleagues is honored to hold the 18th Regional Geoscience Conference of Southeast Asia : GEOSEA 2024 during 20 – 23 February 2024 at Pullman Khon Kaen Raja Orchid Hotel, Khon Kaen, Thailand.

For the forthcoming international conference, we are glad to promote the theme “Geoscience for Society” in order to inspire people to acknowledge the importance of geology for their communities and all societies. The 18th GEOSEA conference is a fantastic venue for all participants, especially for SEA geoscience communities to collaborate, share ideas, and discuss knowledge between GEOSEA’s members, institutions, organizations, and geoscientists. In addition, GST is proud to introduce “The Land of Dinosaurs Roaming” in Khon Kaen and the vicinity area. It is well known that the north-eastern part of Thailand discovered diversities of dinosaurs aging Jurassic – Cretaceous. It would be a marvelous opportunity for SEA geoscientists to explore the several types of ancient creatures that once used to roam on Earth.



PROGRAM



GEOSCIENCE FOR SOCIETY
FEBRUARY 20 - 23, 2024
KHON KAEN, THAILAND

TIME/DATE	20 FEBRUARY 2024	21 FEBRUARY 2024	22 FEBRUARY 2024	23 FEBRUARY 2024	24-26 FEBRUARY 2024
08.00	Registration	Registration	Registration		Registration (24 February)
09.00	Pre - Conference Field Trip Cenozoic Petrified Wood in Khon Kaen	Opening Ceremony	Mid - Conference Field Trip Visiting Sirindhorn Museum and adjacent area	Presentation	Post - Conference Field Trip 1. Khon Kaen Geopark 2. Kalasin Geopark 3. Ubon Ratchathani Geopark
10.00		Keynote Speaker			
11.00					
12.00	Lunch				
13.00		Presentation	Mid - Conference Field Trip Visiting Sirindhorn Museum and adjacent area	Presentation	Post - Conference Field Trip 1. Khon Kaen Geopark 2. Kalasin Geopark 3. Ubon Ratchathani Geopark
14.00	AFGEO Meeting + Country report				
15.00					
16.00					
17.00					
18.00		Welcome dinner			

Sirindhorn Museum: Dinosaur excavation site and exhibition museum.

ACTIVITIES

1. Business Meeting
 - AFGEO Executive
 Board Meeting

2. Conferences
3. Exhibition

4. Field Trip

AFGEO: The ASEAN Federation of Geoscience Organizations (AFGEO) is a non-profit organization that represents the national geoscience organizations in the ASEAN Region. AFGEO was established in 2021 with the goal of promoting the geosciences in the ASEAN Region and its member states.

SESSION TOPIC

“GEOSCIENCE FOR SOCIETY”



GEOSCIENCE FOR SOCIETY
FEBRUARY 20 - 23, 2024
KHON KAEN, THAILAND

The 18th **GEOSEA** conference has three subthemes as followed:

I. Geological Resources for Society:

How your geology impact/involve/contribute to the community?

- A. Geology
- B. Mineral
- C. Fossil
- D. Petroleum and other energy resources
- E. Energy Demand
- F. Economic Geology

II. Geological Environments for Society:

Geological Environments come to be more important to human beings, how does it work?

- A. Environmental Geology
- B. Geological hazard
- C. Global Warming and Climate Change
- D. Governance
- E. Low carbon society

III. Innovations in Geoscience:

Explore how innovation and technology are being used in geoscience projects. (or routine life?)

- A. Geodata and analysis
- B. Geopark, Geotourism, and Geoeducation
- C. Public awareness
- D. Artificial Intelligence and Machine Learning

Some challenging issues:

- What are the current global issues?
- How are geosciences involved with them?
- What are current innovations/new findings?
- What are the positions of geoscientists/geoscience organizations in the current global issues?
- How can geoscientists/geoscience organizations use their knowledge to effectively provide clear and reliable explanations to the public, and how to handle them?

SCHEDULE



The 18th Regional Geoscience Conference of Southeast Asia: **GEOSEA2024**

20th - 23rd February 2024

Pullman Khon Kaen Raja Orchid, Khon Kaen Province, Thailand

Tuesday 20th February 2024

Time	Programmes
Pre-Conference Field Trip: Cenozoic Petrified Wood, Muang Khon Kaen District, Khon Kaen Province	
08.00 - 08.30	Registration
08.30 - 09.15	Depart for Petrified Wood Site
09.15 - 10.30	Stop 1 Petrified Wood Site (Break)
10.30 - 11.00	Depart for Abandoned Quarry
11.00 - 11.45	Stop 2 Abandoned Quarry
11.45 - 12.00	Depart for Pullman Khon Kaen Raja Orchid
12.00 - 14.00	Lunch at Leisure Time
14.00 - 15.00	ASEAN Federation of Geoscience Organizations (AFGEO) Meeting and Country Report
15.00 - 16.00	ASEAN Federation of Geoscience Organizations (AFGEO) Executive Board Meeting
End of the Programmes	

Wednesday 21th February 2024 (Morning)

Time	Programmes
08.00 - 09.00	Registration
09.00 - 09.20	Special Session "GEOSEA2024 Video" Opening Ceremony Welcome Speech By Mr. Kraisorng Kongchalard, Governor of Khon Kaen Province Conference Report By Mr. Kanok Intharawijitr, President of Geological Society of Thailand Opening Remarks By H.E. Ms. Sudawan Wangsuphakitkoson, Minister of Tourism and Sports
09.20 - 09.30	Photo Session
09.30 - 10.00	Keynote Speech 1 "Geoscience for Society" By <i>Mr. Kanok Intharawijitr, President of Geological Society of Thailand</i>
10.00 - 10.20	Coffee Break and Exhibition
10.20 - 10.40	Keynote Speech 2 "Petroleum Exploration Rejuvenation in Mature Basin: Case Study from Western Indonesia" By <i>Mr. Herman Darman, President of AAPG Asia Pacific Region</i>
10.40 - 11.00	Keynote Speech 3 "The Thai Dinosaurs: Past and Present" By <i>Dr. Varavudh Suteethorn, Senior Researcher of Dinosaur Research Unit, Mahasarakham University</i>
11.00 - 11.20	Keynote Speech 4 "Geoconservation in Thailand" By <i>Dr. Tawaporn Nuchanong, Committee in National Geopark/Fossil Protection Act/Cave Management</i>
11.20 - 11.40	Keynote Speech 5 "Development of Khorat Geopark to UNESCO Global Geopark in 2023" By <i>Asst. Prof. Dr. Pratueng Jintasakul, Director of Khorat UNESCO Global Geopark, Nakhon Ratchasima</i>
11.40 - 12.00	Keynote Speech 6 "CCOP activities for Sustainable Earth" By <i>Dr. Young Joo LEE, Director of The Coordinating Committee for Geoscience Programmes in East and Southeast Asia Technical Secretariat (CCOP TS)</i>
12.00 - 13.30	Lunch and Exhibition



The 18th Regional Geoscience Conference of Southeast Asia: **GEOSEA2024**

20th - 23rd February 2024

Pullman Khon Kaen Raja Orchid, Khon Kaen Province, Thailand

Wednesday 21st February 2024 (Afternoon)

Time	Programmes	
	SESSION : Geological Resources for Society Chairman : Dr.Young Joo Lee	SESSION : Geological Resources for Society Chairman : Dr.Sommai Techawan
13.30 - 13.45	Detachment Thrusting and Hydrothermal Processes: Effects on Carbonate Reservoirs in NE Thailand <i>By Sarawute Chatraprasert</i>	Fossil-bearing non-marine Mesozoic formations of south-western Cambodia <i>By Eric Buffetaut</i>
13.45 - 14.00	Geochemical reactions of siliciclastic storage with CO ₂ based on laboratory observation and geochemical modeling. <i>By Kruawun Jankaew</i>	Tectonic significance of zircons and reworked conodonts, Inthanon Terrane, Thailand <i>By Mongkol Udchachon</i>
14.00 - 14.15	Diagenetic and Tectonic Processes Affecting Carbonate Reservoir Characteristics of the Phuhorm Gas Field, Northeastern Thailand <i>By Puntira Henglai</i>	Turtle assemblages from the Phu Kradung Formation (NE Thailand): an updated review and their stratigraphical implications <i>By Haiyan Tong</i>
14.15 - 14.30	Defeat Operational Challenges of Infill Project in Mature Field: Case example from Pattani Basin, Gulf of Thailand <i>By Praiwan Uphatam</i>	The potential of sauropod dinosaurs towards international geological significance with the additional discovery of baby and juvenile early sauropods from the Nam Phong Formation, Chaiyaphum Geopark <i>By Rattanaphorn Hanta</i>
14.30 - 14.45	Phu Phra Petroleum System Modeling: Potential for Unconventional Resources <i>By Monporn Mesdakom</i>	Corals in limestone of Khon San and Phu Pha Man areas of Northeast Thailand <i>By Sathaporn Kavinat</i>
14.45 - 15.00	The impact of wellbore sidetracking on reservoir properties: A case study of Pattani basin, Gulf of Thailand <i>By Atchara Martin</i>	Theropod dinosaurs in Southeast Asia: implications for paleobiogeography <i>By Kridsanupong Puntanon</i>
14.45 - 15.00	Coffee Break	
	SESSION : Geological Resources for Society Chairman : Dr.Nares Sattayarak	SESSION : Geological Resources for Society Chairman : Assoc.Prof.Dr.Mongkol Udchachon
15.15 - 15.30	Geothermal Prospects as a Future Renewable Energy Source: A Geological Context in Thailand with a Case Study in Southern Thailand <i>By Panupong Kongpet</i>	Permian Sponge-Bryozoan Biodiversity in Ban Phot Paleosea, Phetchabun Province and its Sustainable Tourism Promotion <i>By Thasinee Charoentitirat</i>
15.30 - 15.45	Stratigraphically Confined Slope Channel Complex System of Offshore Sabah Basin, Malaysia - Transitioning from Play Concept to Exploration Focus <i>By Harun AlRashid Bin Mohamad Idris</i>	Plant Fossils from the Early Cretaceous of Krabi Province, Southern Thailand <i>By Paul Grote</i>

SCHEDULE



The 18th Regional Geoscience Conference of Southeast Asia: **GEOSEA2024**

20th - 23rd February 2024

Pullman Khon Kaen Raja Orchid, Khon Kaen Province, Thailand

Wednesday 21st February 2024 (Afternoon (Continued))

Time	Programmes	
	SESSION : Geological Resources for Society Chairman : Dr.Nares Sattayarak	SESSION : Geological Resources for Society Chairman : Assoc.Prof.Dr.Mongkol Udchachon
15.45 - 16.00	Impact of Oriented Perforation on fine to medium-grained Sandstone Reservoir in Sarawak Gas Fields. <i>By Inba Malar</i>	Little fossil can do big things: Khok Pha Suam story in the Ubon Ratchathani Geopark <i>By Sita Manitkoon</i>
16.00 - 16.15	Application of Thomas Stieber Juhasz Model in S Field to Unlock the Unseen Reserves from Thinly Bedded <i>By Nor Aziani Othman</i>	Radiolarian Fauna from Southern Thailand and Their Paleogeographic Significance <i>By Doungrutai Saesaengseerung</i>
16.15 - 16.30	Reservoir fluid Identification Study in Mature Field, Balingian Province, Sarawak, Malaysia <i>By Wong Yee Ching</i>	Spatial Integrated Development Plan of Mae Moh Gastropods Fossil Site, Lampang Province, Thailand <i>By Phichamon Kaewjeen</i>
16.30 - 16.45	EUR-m: The Analog-based Reserves Estimation Methodology <i>By Arin Sangsuay and Kasira Laitrakul</i>	Fauna assemblage of late Cretaceous Phra Wihan Formation from Hin Lat Pa Chad dinosaur footprint site, Khon Kaen Geopark <i>By Krishna Sutchu</i>
16.45 - 17.00	Remaining Opportunities from Shallow Pay in G1/61 existing wells <i>By Hathairat Roenthon</i>	Conservation of the petrified wood site (excavation pit no. 1) at Tak Province, Thailand <i>By Phoobet Sakha</i>
18.00 - 21.00	Welcome Dinner	

Thursday 22nd February 2024

Time	Programmes
Mid - Conference Field Trip: Sirindhorn Museum	
07.30 - 08.30	Registration
08.30 - 11.00	Depart for Sirindhorn Museum
11.00 - 12.00	Stop 1 Phu Kum Khao Excavation Site
12.15 - 13.00	Lunch
13.15 - 15.15	Stop 2 Sirindhorn Museum and laboratory
15.15 - 17.00	Depart for Pullman Khon Kaen Raja Orchid
End of the programmes	

SCHEDULE



The 18th Regional Geoscience Conference of Southeast Asia: GEOSEA2024

20th - 23rd February 2024

Pullman Khon Kaen Raja Orchid, Khon Kaen Province, Thailand

Friday 23rd February 2024 (Morning)

Time	Programmes	
	SESSION : Innovations in Geoscience Chairman : Mr.Cherdsak Utha-aroon	SESSION : Geological Environment for Society Chairman : Dr.Tawsaporn Nuchanong
09.00 - 09.15	Enhancing Tunnel Boring Machine Performance Prediction through Deep Learning: A Comprehensive Study on Massive and Highly Fractured Granite Rock Conditions By <i>Nantapol Monthanopparat</i>	The effectiveness of rock slope hazard assessment in peninsular Malaysia perspectives By <i>Ahmad Nizam Hasan</i>
09.15 - 09.30	The Integration of Speleological Study and LiDAR Scanning to Explore Saen Han Cave, Uttaradit Province, Northern Thailand By <i>Pichawut Manopkawe</i>	CCS Storage Assessment: Capacity and Suitability By <i>Ratthapon Noosri</i>
09.30 - 09.45	Digital twin of Klang cave, Krabi with a contribution of role-playing game in geotourism By <i>Passawan Chaisurajinda</i>	Utilising Visualisation and Simulation for Geological Disaster Risk Management and Mitigation Action Plan: Case Studies from Northern Peninsular Malaysia By <i>Mohamad Faruq Syahmi Md Aripin</i>
09.45 - 10.00	Quality Control of Seismic Inversion – A Case Study from Serendah Field, Off the Coast of Sarawak, Offshore Malaysia By <i>Boon Ee Juan</i>	Assessment of environmental changes in Samut Sakhon province during the last glacial maximum By <i>Akkaneewut Jirapinyakul</i>
10.00-10.15	From We to World - GHG Hydrocarbon By-product Management By <i>Leong Dong Guo</i>	Identification of New Holocene Eruptions in Isarog Volcano, Luzon, Philippines using AMS Radiocarbon-14 Dating By <i>Timothy John Daita</i>
10.15 - 10.30	Target-oriented 3D Marchenko Imaging: An Example from a field in offshore Malaysia By <i>Abdul Rahim Md Arshad</i>	Paleoseismological investigation in Loei, northeastern Thailand By <i>Weerachat Wiwegwin</i>
10.30 - 10.45	1D Modeling of Thermal Maturity for the Study on Source Rock Potential of the Western Basin, northern Gulf of Thailand By <i>Khuancheewa Phonnikorn</i>	PSI (Persistent Scatterer Interferometry)-based Hotspot Analysis of Slow-Moving Landslides of Albay Province, Philippines By <i>Karl Malcolm Cordova</i>
10.45 - 11.00	Coffee Break and Exhibition	
	SESSION : Innovations in Geoscience Chairman : Dr.Tawsaporn Nuchanong	SESSION : Geological Resources for Society Chairman : Assoc.Prof.Dr.Rungroj Arjwech
11.00 - 11.15	Identifying and Assessing Geodiversities at Kulen Area in Sime Reap Province, Cambodia, for Potential Candidate of Geopark By <i>Chandoeun Eng</i>	Engineering Geological Model and Total Geological History Approach in Practice: Some Case Studies from Malaysia By <i>Abd Rasid Jaapar</i>
11.15 - 11.30	Assessment of Surigao Del Norte Province, Philippines as a potential UNESCO Global Geopark By <i>Patrick Sam M. Buenavista</i>	Formation of Nan-Uttaradit-Srakaew and Related Sutures: A Re-interpretation from the old and new Geological informations By <i>Prinya Putthapiban</i>
11.30 - 11.45	A New Way of Geological Fieldtrip – A Geowonder of Southern Tarakan Basin By <i>Mohd Asraf Khamis</i>	Gold extraction and Environmental impacts in Tarlay, Tachileik district, Shan East of Myanmar, near Golden Triangle By <i>Myat Zaw</i>
11.45 - 12.00	The Chiang Dao Cave System survey for Sustainable Development By <i>Chaiyasit Kruasorn</i>	Tectono-structural Study on Suture Zone of Eastern Myanmar By <i>Sandy Chit Ko and Soe Lwin Myin</i>
12.00 - 12.15	Seismic Study of Single Mud Extrusive and Intrusive Complex in Relation to Reservoir Depositional Process the Northwest Sabah Basin, Malaysia By <i>Indra Wahyudi</i>	Stratigraphic Position of Hlawga Shale in Hlawga Area, Shwepyithar Township, Yangon Region, Myanmar By <i>Hnin Hnin Maung</i>
12.15 - 13.15	Lunch and Exhibition	

SCHEDULE



The 18th Regional Geoscience Conference of Southeast Asia:

GEOSEA2024

20th - 23rd February 2024

Pullman Khon Kaen Raja Orchid, Khon Kaen Province, Thailand

Friday 23rd February 2024 (Afternoon)

Time	Programmes	
	SESSION: Geological Resources for Society Chairman: Mr.Cherdsak Utha-aroon	SESSION: Geological Resources for Society Chairman: Assoc.Prof.Dr.Mongkol Udchachon
13.15 - 13.30	Exhumation of the Khorat Plateau and Western Thailand regions: Based on Geochronological and Geological Investigations By <i>Punya Charusiri</i>	Hot springs and geothermal systems of Thailand-Malay Peninsula-Singapore By <i>Mohd Hariri Arifin</i>
13.30 - 13.45	Late Triassic/earliest Jurassic Indosinian orogenic events in the Thailand/Myanmar trans-border zone By <i>Michal Krobicki</i>	Mining Geology and Exploration Challenge of Non-Radioactive Rare Earth Element (NR-REE) Resources in Ion Adsorption Clay Deposits (IAC) A Case Study from Kelantan State, Peninsular Malaysia By <i>Ahmad Nizam Hasan</i>
13.45 - 14.00	The Geological Significance of the Chaiburi Formation (Triassic), Phatthalung Province, Southern Thailand By <i>Kittichai Tongtherm</i>	LA-ICPMS-Based Trace Element Analysis of Pyrite and Arsenopyrite in the Pulai Area, Central Gold Belt of Peninsular Malaysia By <i>Nur Nadwa Syahirah Ai Zamruddin</i>
14.00 - 14.15	Historical Geology of Kalasin Province and its vicinity, Northeastern Thailand By <i>Pitaksit Ditbanjong</i>	Challenges in finding hidden gems in a mature area in offshore Sarawak, Malaysia By <i>Nur Izzatee Zainuddin</i>
14.15 - 14.30	Geochemistry of core sediments from coastal part of the Bay of Bengal, Bangladesh By <i>H. M. Zakir Hossain and Myat Zaw</i>	Petrographic and Geochemical Characterization of the crustal section of the Dinagat Ophiolite: Insights to the tectonic affinity of Dinagat Island, Philippines By <i>Nichole Anthony Pacle</i>
14.30 - 14.45	Sedimentological Characteristics in Comparison with Ground Penetrating Radar on Storm Deposits induced by the Tropical Storm Pabuk 2019 along the Western Coast of the Gulf of Thailand By <i>Chanakan Ketthong</i>	Geochemistry of scandium in low-grade nickel laterite deposits of Surigao and Agusan, Philippines By <i>Kevin Garas</i>
14.45 - 15.00	Devonian to Lower Carboniferous strata of the Shine Jinst region revisited: Facies development and stratigraphy in southern Mongolia (Gobi Altai Zone) By <i>Peter Königshof</i>	
15.00 - 15.30	Closing Ceremony By Mr. Kanok Intharawijitr President of Geological Society of Thailand	
15.30 - 16.30	Coffee Break and Exhibition	

POSTER SESSION

I. Geological Resources for Society:

Topic	Author
Application of Geophysical Techniques in Gold Prospecting: A Case Study of the Chatree Gold Mine, Phichit-Phetchabun areas, Thailand	Pitch Atayos
A study on sedimentary facies and paleocurrents of continental red beds Kaeng Raboet Formation, Western Thailand	Panus Hong
A subtropic evergreen broadleaf forest during the late Oligocene – early Miocene in northern Thailand	Napussawan Thongsangtum
Best Practices of Well Correlation: Pragmatical Approach for Responsible Subsurface Data Integration	Gozali Rahman
Early-Middle Jurassic benthic foraminiferal assemblages from Khao Kaeng Luang (Kanchanaburi, western Thailand): Paleogeography implication	Kantanat Trakunweerayut
Evolution of the Upper Palaeozoic platform, slope and basin in the Loei-Phetchabun Fold Belt, Indochina Terrane	Mongkol Udchachon
Geological Characteristics of "Dimension Stone" – Materials for Construction in Sukhothai Historical Park	Supaporn Jansamut and Vimoltip Singtuen
Integrated Multi-Disciplinary Approach to Unlock the Hidden Treasure in a Geological Complex Deepwater Gas Field, Off the Coast of Sabah, Offshore Malaysia	Denise Ong
Integrated Studies for Geological Storage of CO ₂ in Northeastern Thailand: Concepts, Contributions and Challenges	Sukonmeth Jitmahantakul
Mineral Exploration Study Along the Transition Zone of Mambilla Plateau and Environs Northeast, Nigeria Using Integrated Geological Data.	Josiah Nuhu Jabbo
Minimocursor phunoiensis (Dinosauria: Neornithischia): a new dinosaur from Thailand	Sita Manitkoon
New iguanodontid footprints from the Early Cretaceous Khok Kruat Formation, Northeastern Thailand	Tida Liard
New vertebrate microremains localities from the Early Cretaceous Khok Kruat Formation	Sita Manikoon
North Bongkot Challenging: Relationship between fault timing and hydrocarbon accumulation	Thananate Konthong
Osteoderms of Pholidosaurid Crocodylomorphs from the Phu Kradung Formation of Thailand	Phornphen Chanthasit
Petrographical and Geochemical Characteristics of Felsic Volcanic Rocks in Nong Khai and Udon Thani Provinces, NE Thailand	Thatchapon Seela and Vimoltip Singtuen
Petrology of basaltic rocks in Surin Province and volcanic landforms comparison in northeastern Thailand	Supakit Srisaphon and Vimoltip Singtuen
Preliminary study of the relationship between geological factors and the distribution of forest: A case study in Phu Wiang Mountain Valley of Khon Kaen Geopark	Vimoltip Singtuen
Preliminary study on the Cretaceous lizard (Reptilia, Squamata) from Pra Prong, Sra Kaew, Thailand	Adun Samathi
Redza Bin Hanif (Resource)Unlocking Oil Potential from Thin Beds Reservoir through geological concept and advance analysis & surveillance in Deep Water Oil field, Sabah, Malaysia	Mohd Shah
REE resources in Phang Nga, Southern Thailand	Thitikan Junrattanamanee
Sedimentology and palaeontology of the Silurian-Devonian sequences from the Loei Fold Belt, Indochina Terrane: Evidences for basin studies	Mongkol Udchachon
Seismic Study of Single Mud Extrusive and Intrusive Complex in Relation to Reservoir Depositional Process the Northwest Sabah Basin, Malaysia	Suraphan Phimthong
Spatial Intergrated Development Plan of Tha Kradan Fossil Site, Si Sawat District, Kanchanaburi Province.	Natthanakorn Songpracha

POSTER SESSION

I. Geological Resources for Society (Continued):

Topic	Author
The First Record of Neocalamites from Phu Noi, the Jurassic Phu Kradung Formation, Kalasin, Northeastern Thailand	Phornphen Chanthasit
The Master Plan for the Protection of Fossil Sites and Fossils for the years 2023-2037	Pannipa Saetian
The Mesozoic vertebrate footprint sites of Thailand	Krishna Sutchai
The Paleogene Fault Systems in Songkhla Basin, Gulf of Thailand : New Insight from 3D Seismic Data	Makorn Sriwiset
The Preliminary Deposit Investigation of Potash and Rock Salt in Renu Nakhon area, Nakhon Phanom province, Thailand	Pranot Rattana
Unlocking Exploration Success in the Pha Nok Khao Carbonate: The Role of the Karst and Fracture System	Teekayu Benjawan
Unveiling the Potential: Navigating Opportunities and Challenges in the Exploration of Permian Carbonate Play on the Khorat Plateau, Thailand	Apichart Suphawajruksakul

II. Geological Environments for Society:

Topic	Author
Assessment of Seepage Sources in Southeast Endwall of Mae Moh Mine, Lampang	Rungroj Benjakul
Evaluating Earthquake Ground Response base on MASW Technique.	Pakawat Sriwangpon
Geochemical Anomaly Detection and Resource Assessment in Eastern Thailand: Integrating Stream Sediment Analysis and Multifractal Property for Mineral Exploration	Oraphan Yaisamut
The CHW system-based coastal hazard assessment in Phetchaburi province.	Sumet Phantuwongraj

III. Innovations in Geoscience:

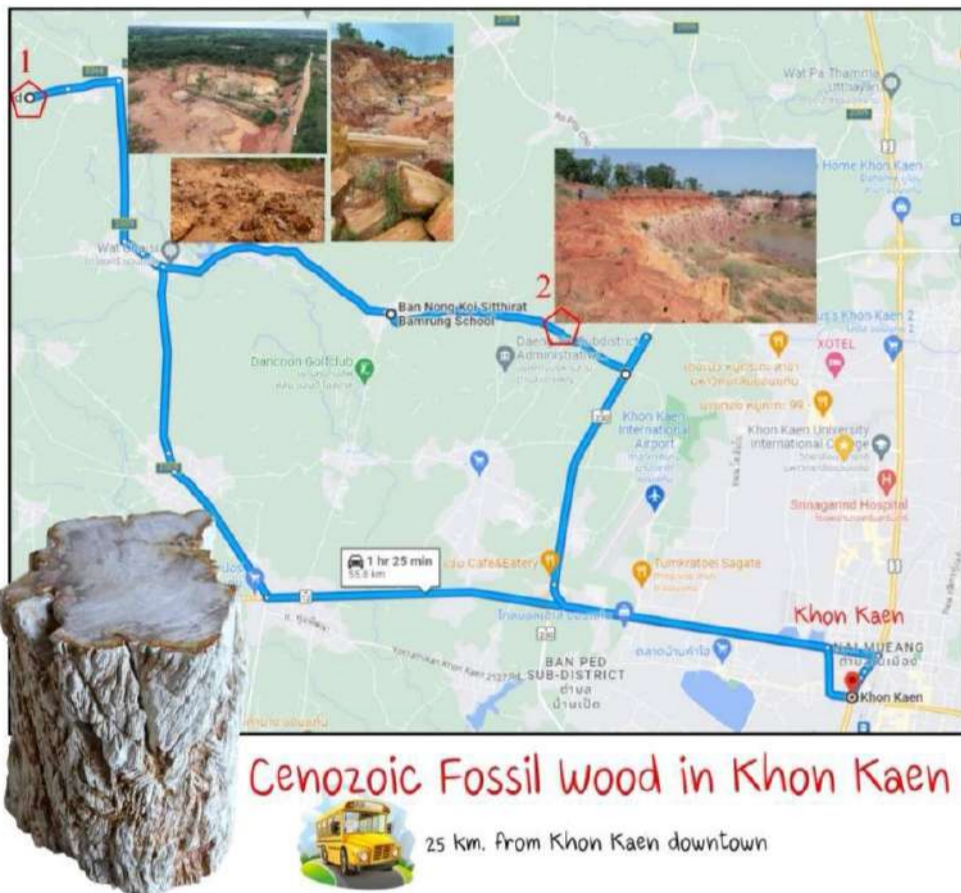
Topic	Author
Application of XRF mapping in studying fossil fish from Miocene Phetchabun, Thailand	Robert You He

PRE-CONFERENCE FIELD TRIP (1/2 DAY TRIP)



GEOSCIENCE FOR SOCIETY
FEBRUARY 20 - 23, 2024
KHON KAEN, THAILAND

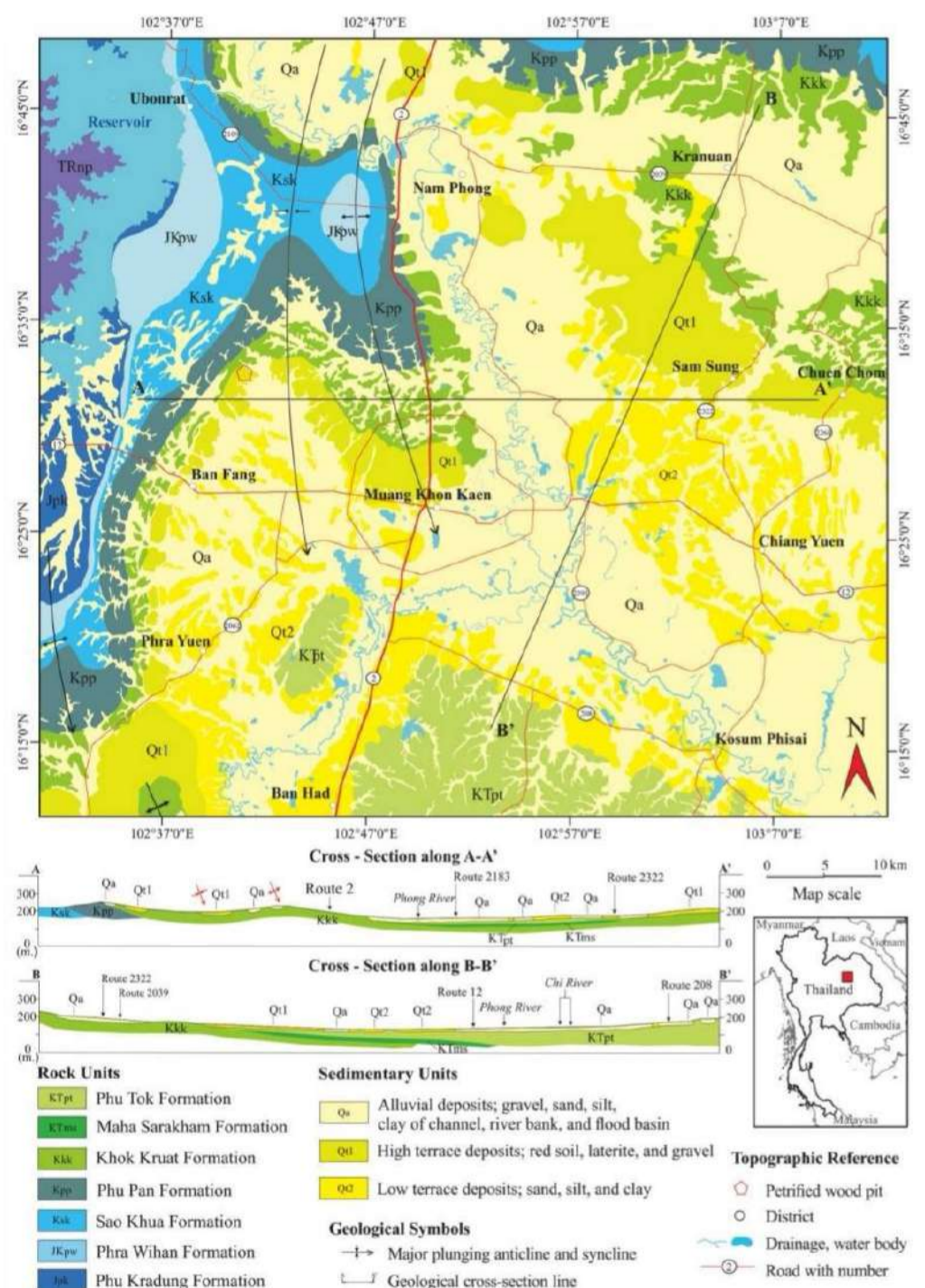
Cenozoic petrified wood



Cenozoic petrified wood pit located at Ban Non Rang, Muang District just only 25 Km. from Khon Kaen downtown. More than 30 timbers of petrified wood were observed, ranging in sizes from 0.3 to 14.8 meters. Sedimentology and sedimentary sequence of spectacular petrified wood bearing sediments can be studied at this abandoned pit and an earth pit near by.

Depositional environments of both sites are open for discussion whether they are fluvial or alluvial fan.

In addition, more than 100 years old ordination hall and its murals of Wat Chiai Si, Ban Sawatthi, Muang District, Khon Kaen is an optional visit.





Sirindhorn Museum



Sirindhorn Museum is formerly known as Phu Kum Khao Dinosaur Research Center. In 1994, skeletons of the herbivorous *Phuwiangosaurus Sirindhornae* were discovered in the current excavation site. Since the end of 1994, Department of Mineral Resources started a thorough and systematic excavation which they found that Phu Kum Khao was Thailand's most complete site for herbivorous dinosaurs' skeletons. Different sizes of dinosaur skeletons were discovered, with more than 7 types of herbivorous dinosaurs identified and resulting in 700 bones. Above all, pieces of skull, teeth and jaw along with scattering bones were still in complete conditions that they could almost make up for the whole body structure.



After that major discovery, the Department of Mineral Resources built a roofed structure to cover the excavation site as a learning and academic resource. It led to the construction of the Phu Kum Khao Dinosaur Museum, which was completed in 2006. HRH Princess Maha Chakri Sirindhorn graciously granted the name "Sirindhorn" as the name of the Museum on 12 October, 2006.



Sirindhorn Laboratory Hall is a research center that has numerous dinosaur fossils and the bones of fish, turtles, and crocodiles that are being investigated, researched, and identified. In addition, the museum has a fossil storage facility for collecting, conserving, and preserving reference fossils, including field samples obtained in a systematic manner and registering modern animal fossils and skeletons for comparative research. There is a collection of ancient biological information and related information in the fossil database system, as well as a systematic information system for ancient biological information.

POST-CONFERENCE FIELD TRIP 3 DAYS 2 NIGHTS



GEOSCIENCE FOR SOCIETY
FEBRUARY 20 - 23, 2024
KHON KAEN, THAILAND

Khon Kaen Geopark, the valley of dinosaurs and the land of local wisdom



© Tik-Thuwanan Krueabudda

Khon Kaen Geopark is only 60 kilometers away from the city of Khon Kaen. It takes just 1 hour to reach the land of the Dinosaur Valley and Phu Wiang National Park, which is known as the “the first page of dinosaur fossils discovery in Thailand.” This has led to its development as a model for the conservation, protection, and sustainable development of the area’s heritage. It covers an area of over 1,038 square kilometers. In addition to the remarkable features of the landscape, dinosaurs, and distinctive geological formations in a form of one entrance – one exit double syncline, the geopark also displays abundant natural resources, artistic narratives, archaeological history, community traditions, and local products that are created from the wisdom of the local people. Furthermore, it offers a tourism route that carries the essence of "Isan culture."

During your visit, you will encounter several attractions, including the Chom Narin shrine, which serves as the only entrance and exit point of Phu Wiang Dinosaur Valley. You'll also find the first Dinosaur Museum in Thailand, Phu Wiang Dinosaur Museum and Fossil Research Center. The legendary tourist route of dinosaur discoveries includes the Uranium Field, Pratu Teema Creek, and the excavation site 3 (the birthplace of Thailand's fossil discoveries). There's also the viewpoint of Chom Tawan Cliff, located at the edge of Phu Wiang Mountain, offering a panoramic view of the surrounding area below. Additionally, there are 3-kilometer nature trail, and also footprints of ornithopods and theropods. You can explore the cultural tourism route of the local community in Phu Wiang, which includes visits to Tham Kwang Temple, Hin Rong (rock fissure) , and the astounding Rock Terrain. These programs are community-based tourism initiatives that connect geological heritage, cultural heritage, intangible heritage, and wellness tourism. There's also the Dhoranin Fabric Learning Center, where you can explore the integration of geology with local fabric weaving traditions. The Ban Hin Rong Cultural Village is another place of interest, showcasing intangible heritage that has been developed through a partnership with Khon Kaen Geopark.

Other attractions include the Dharmachakri Farm, where vetiver grass is cultivated to create a grass-woven dinosaur sculpture, the Phu Wiang Historical Museum at the first public school in Khon Kaen province, which is an evidence of educational reformation, and the Krisana Community Lab Model Network, which follows the sufficiency economy philosophy and is well adapted to fight climate change. You can also visit the Ban Suan Gluay Silk Village, a group of female artisans who collectively develop Thai-style woven silk that have been internationally recognized as a global cultural heritage. Finally, you can savor the taste of the signature Grilled Chicken dish from Nong Reua, a delicacy loved by the people of Khon Kaen.



POST-CONFERENCE FIELD TRIP 3 DAYS 2 NIGHTS



GEOSCIENCE FOR SOCIETY
FEBRUARY 20 - 23, 2024
KHON KAEN, THAILAND

Kalasin Geopark



This post conference trip, about 120 Km. from Khon Kaen downtown, will lead you to the most spectacular fossil sites in Southeast Asia situated in the middle of the unique "Phu Thai" culture and typical geomorphology of Khorat Plateau of Kalasin Geopark, Kalasin Province. The trip includes Phu Khum Khao dinosaur site museum exhibiting the most complete articulated sauropod skeleton found in situ with other 6 dinosaur individuals, Sirindhorn Museum which is the largest paleontological learning center and vertebrate collection in Southeast Asia, Phu Noi fossil site with more than 5,000 pieces of fossils, including dinosaurs, crocodiles, turtles, fish, amphibians and pterosaurs, and Phu Faek footprint site showing medium-large theropod trackways and a sauropod trackway.

Moreover, cultural stops and natural trails are included in the trip such as Phu Khao temple with sandstone left-handed reclining Buddha image, Praewa Silk weaving of Phu Thai ethnic community, the beauty of Pha Li waterfall, fish fossils exhibition at Buddhabutre temple, Phu Pha Peung natural trail where the type section of Early Cretaceous Phu Phan Formation and a red palm cave are located and the exquisite sculpture of Buddha images on the cross-bedding Phu Phan sandstone at Phu Dan Hai temple.

Warm welcome to Kalasin Geopark !

POST-CONFERENCE FIELD TRIP 3 DAYS 2 NIGHTS



GEOSCIENCE FOR SOCIETY
FEBRUARY 20 - 23, 2024
KHON KAEN, THAILAND

Ubon Ratchathani Geopark



This route is about 380 Km. from Khon Kaen downtown. This trip will provide you a chance to study excellent reference rock sequence of the Mesozoic Red-bed Khorat Group along the bank of the Mekong River. Boat trip along the Mekong River to visit the amazing rock architecture and landforms is also scheduled. Visit Pha Taem the most famous and largest prehistoric painting on the rock shelter in Thailand. Transitional boundary between sediments of meandering and braided river of the Khorat Group can be examined at this location. Wat Phu Phrao, the famous temple, at the top of a cuesta closed to Thai-Lao border is worth stopping by.

Lastly, visit Khok Pha Suam locality where the youngest dinosaur relicts in Thailand, 5 species of freshwater shark and other invertebrate fossils were found.

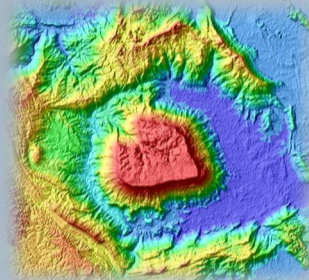


CALL FOR CONTRIBUTIONS



**GEOSCIENCE FOR SOCIETY
FEBRUARY 20 - 23, 2024
KHON KAEN, THAILAND**

Prospective authors are kindly encouraged to contribute to the 18th GEOSEA conference through submissions of their research abstracts, papers, and posters. High-quality research contributions describing original and unpublished results of conceptual, constructive, empirical, experimental, or theoretical work in all areas of geology and geoscience are cordially invited for presentation at the conference.



SIGNIFICANT MILESTONES



**GEOSCIENCE FOR SOCIETY
FEBRUARY 20 - 23, 2024
KHON KAEN, THAILAND**

Abstracts/Full-Text Paper / Poster Submission and Registration Start	Closed
Abstracts/Full-Text Paper / Poster Submission Deadline	Closed
Notification of Acceptance/Rejection	Closed
Registration and Payment Deadline	February 14, 2024
Conference Dates	February 20-23, 2024

GEOSEA2024 WEBSITE

www.geosea2024.com



REGISTRATION FEES

Participant	General Registration (31st December 2023 – 14th February 2024)
GST Member - Pre-Conference Field Trip - Conference - Mid-Conference Field Trip	6,000 THB 200 USD
Non-GST Member - Pre-Conference Field Trip - Conference - Mid-Conference Field Trip	7,500 THB 250 USD
Student - Conference	1,500 THB 50 USD

GST Member: Registration fees include pre-conference field trip, lunch (February 21,23, 2024), morning and afternoon breaks (February 21,23, 2024), welcome dinner (February 21, 2024), and mid-conference field trip (February 22, 2024).

Non-GST Member: Registration fees include pre-conference field trip, lunch (February 21,23, 2024), morning and afternoon breaks (February 21,23, 2024), welcome dinner (February 21, 2024), and mid-conference field trip (February 22, 2024).

Student: Registration fees include lunch (February 21,23, 2024), morning and afternoon breaks (February 21,23, 2024), and welcome dinner (February 21, 2024).

POST-CONFERENCE FIELD TRIP FEES

Participant	ROUTE A Khon Kaen Geopark (80 Km. from Khon Kaen city center)	ROUTE B Kalasin Geopark (150 Km. from Khon Kaen city center)	ROUTE C Ubon Ratchathani Geopark (350 Km. from Khon Kaen city center)
GST Member	5,000 THB 140 USD	8,000 THB 230 USD	9,500THB 270 USD
Non-GST Member	6,000 THB 170 USD	9,000 THB 260 USD	10,500 THB 300 USD

All Post-Conference Field Trip (a 3-day trip, February 24-26, 2024) registration deadline on February 14, 2024.

Minimum Maximum Participant: ROUTE A (8-24 people), ROUTE B (8-24 people), ROUTE C (8-15 people)

GST Member: Field Trip fees include activities, transportation, meals, and accommodations.

Non-GST Member: Field Trip fees include activities, transportation, meals, and accommodations.

Payment Instructions

Swift Transfer

Account no : 661-5-86307-3

Account Name : Geological Society of Thailand

Swift Code : KRTHTHBK

Bank name : Krung Thai Bank Public Company Limited

Bank Branch : Department of Industrial Works

Bank Address : Rama VI Rd, Thung Phaya Thai, Ratchathewi, Bangkok 10400

Bank Telephone: 02 354 4336

Note: International bank transfer fees are the responsibility of the participants.

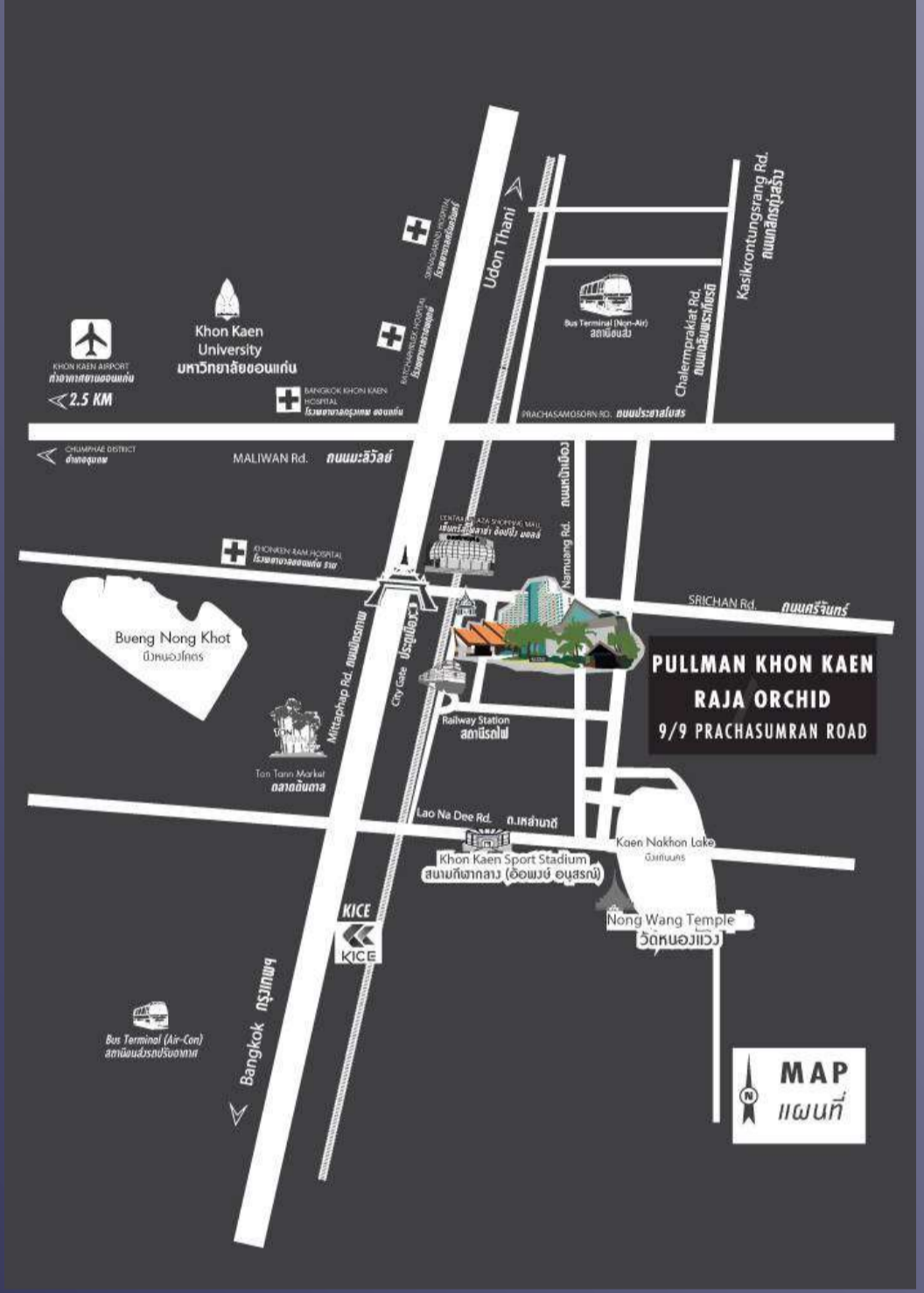
The registration fee is non-refundable.

VENUE



**GEOSCIENCE FOR SOCIETY
FEBRUARY 20 - 23, 2024
KHON KAEN, THAILAND**

Pullman Khon Kaen Raja Orchid Hotel Prachasumran Road, Amphoe Muang Khon Kaen,



Pullman Khon Kaen Raja Orchid is an international premium branded hotel at Khon Kaen city center. A 10 minutes drive from the airport. Situated in the district's business center close to shopping area - Tuk Com (IT mall & Department store), Central Plaza shopping mall, banks and hospitals. Easily accessible from the Khon Kaen railway station as well as the bus stations. Lake Park, a 10 minutes driven to government offices and Khon Kaen University. The hotel is easily accessible from the Khon Kaen railway station and the bus stations. In addition, there are several airlines from and to Bangkok daily.

The distance between Khon Kaen Airport (KKC) and Pullman Khon Kaen Raja Orchid is 8.5 km. Both taxi and bus are normally used for transportation from Khon Kaen Airport (KKC) to Pullman Khon Kaen Raja Orchid.

Taxi : Price estimate About THB 95 –120

**Bus : Khon Kaen city bus schedule every 2 hours from Khon Kaen Airport to Central Plaza shopping mall (20 min.) and 12 min. by walk to Pullman Khon Kaen Raja Orchid
Price estimate About THB15**

ACCOMMODATIONS



**GEOSCIENCE FOR SOCIETY
FEBRUARY 20 - 23, 2024
KHON KAEN, THAILAND**

Residents	Distance to Venue (km)	Room Type	Price (Baht/room/night)	Rates (\$) (room/night)
Pullman Khon Kaen Raja Orchid*	-	Standard 2 people	1,800	52
		superior 1 or 2 people	1,900 or 2,200	55 or 63
		Deluxe 2 people	2,800	80
		Junior Suite 2 people	3,800	109
		Executive Suite 2 people	4,800	138
B2 Khon Kaen Premier Hotel	0.25	superior Premier 2 people	840	24
		Deluxe Triple 3 people	890	26
		Luxury Premier 2 people	990	29
		Luxury Triple 3 people	1,100	32
Ad Lib Hotel Khon Kaen*	0.28	KAEN Deluxe 2 people	4,000	115
		KAEN Premier 2 people	4,500	129
		KAEN Corner Suite	6,500	186
		KAEN Studio	7,000	200
Glacier Hotel Khon Kaen*	0.4	superior 2 people	1,200	35
		Deluxe 2 people	1,400	40
		Premium 2 people	1,600	46
Le cassia Hotel*	1.4	Superior 2 people	2,000	58
		Deluxe 2 people	3,000	86
B2 Khon Kaen Boutique & Budget Hotel	1.6	superior 2 people	640	19
		Deluxe Triple 3 people	690	20
		Junior Suite 2 people	850	25
		President Suite 4 people	1,200	35
Avani Khon Kaen Hotel & Convention Centre*	2.8	Avani 3 people	1,841	53
		Avani Premier 3 people	2,156	62
		Avani Junior Suite 3 people	3,801	109
		Avani Executive Suite 3 people	6,566	188
		Avani Royal Suite 3 people	7,266	208
L2 Hotel Khonkaen*	2.8	superior King 2 people	1,200	35
		superior Twin 2 people	1,200	35
		Deluxe 2 people	1,500	43
		Suite 2 people	3,000	86
The Impress Khonkaen Hotel*	5.1	Standard 1 people	500	15
		Standard Double 2 people	900	26
		Superior Double 2 people	1,200	35
The Lake Hotel Khonkaen*	6	Deluxe 2 people	990	29
		Pool Access 2 people	1,190	35
		Suite Villa 2 people	1,390	40
		Suite Building 2 people	1,612	47
		Family/Villa Zone 2 people	1,990	57
Anchan Laguna Hotel*	8.5	Standard 2 people	1,300	38
		superior 2 people	1,500	43
		Deluxe 2 people	1,700	49
		Suite 2 people	3,500	100

*This price includes breakfast.

CLIMATE

The average temperature in Khon Kaen in February for a typical day ranges from a high of 34°C to a low of 20°C. Some would describe it as pleasantly warm with a gentle breeze.



CURRENCY

Thai baht (THB)

1 USD = 35.56 THB, as of January 2024



**GEOSCIENCE FOR SOCIETY
FEBRUARY 20 - 23, 2024
KHON KAEN, THAILAND**

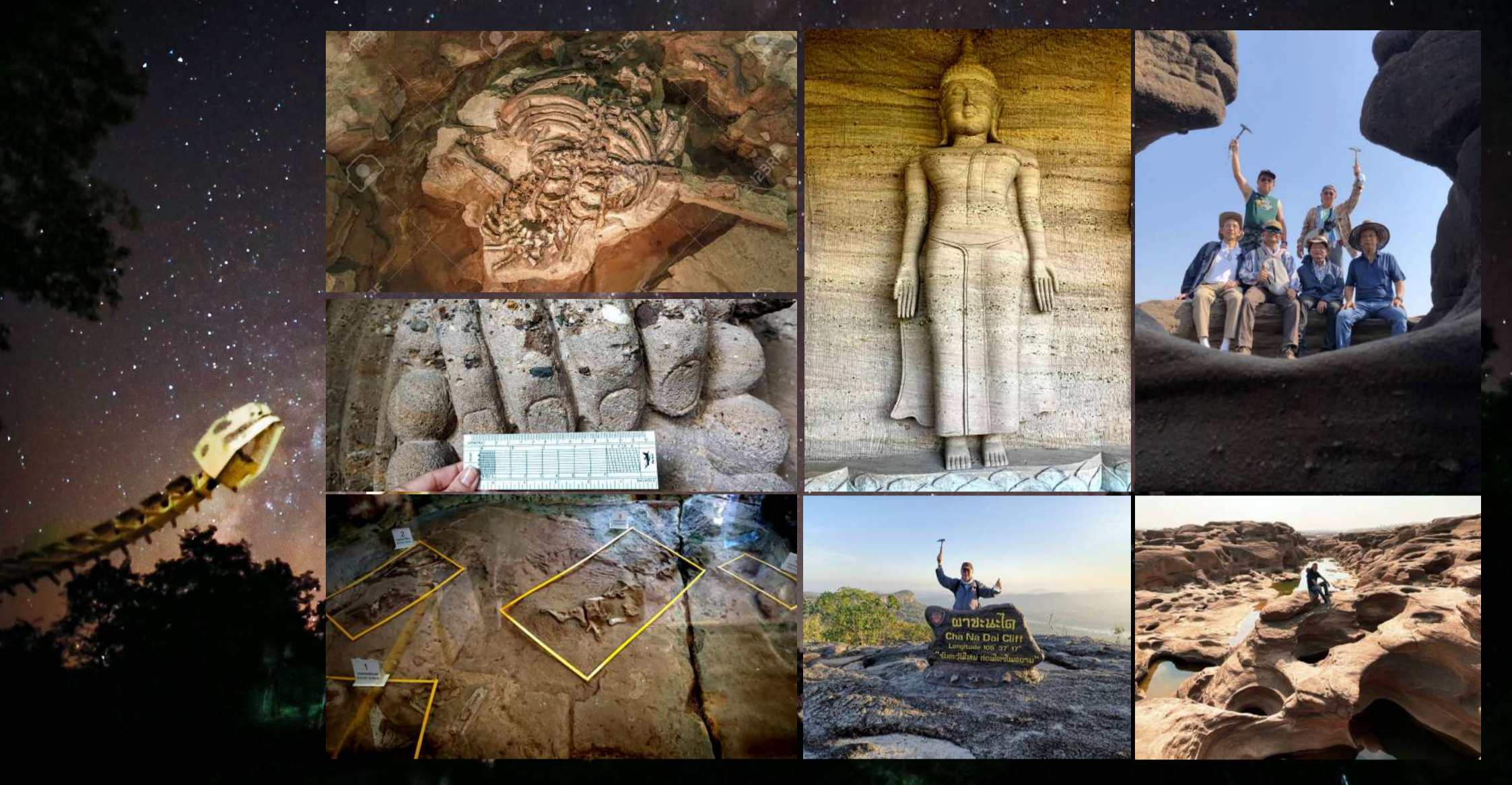
CONTACT

information@geosea2024.com

For general information, Registration, and Payment

abstract@geosea2024.com

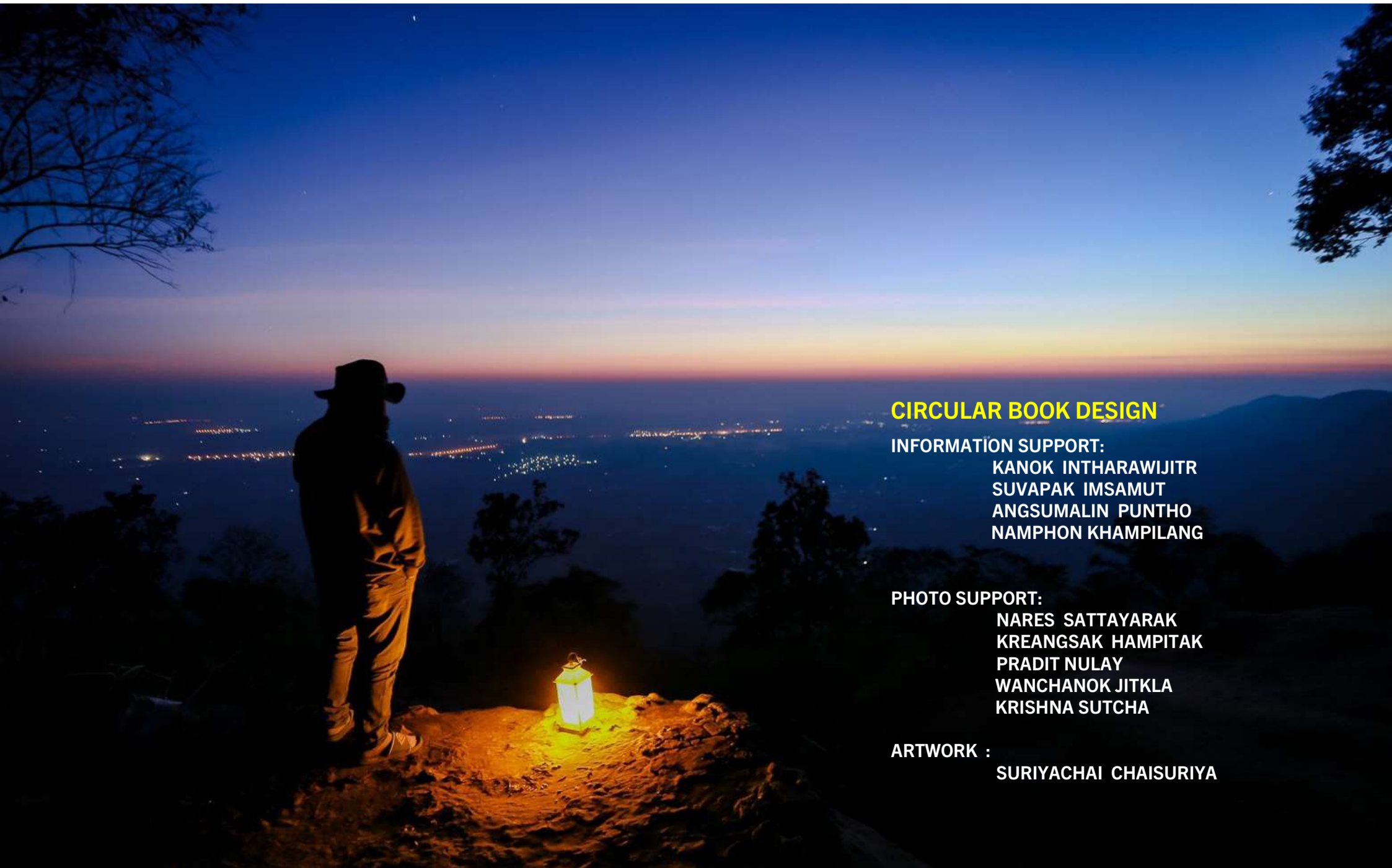
For Oral & Poster Presentation, Abstract & Full Paper Submissions,
and Schedule



The 18th Regional Geoscience Conference of Southeast Asia : GEOSEA 2024



GEOSCIENCE FOR SOCIETY
FEBRUARY 20 - 23, 2024
KHON KAEN, THAILAND



CIRCULAR BOOK DESIGN

INFORMATION SUPPORT:
 KANOK INTHARAWIJITR
 SUVAPAK IMSAMUT
 ANGSUMALIN PUNTHO
 NAMPHON KHAMPILANG

PHOTO SUPPORT:
 NARES SATTAYARAK
 KREANGSAK HAMPITAK
 PRADIT NULAY
 WANCHANOK JITKLA
 KRISHNA SUTCHA

ARTWORK :
 SURIYACHAI CHAISURIYA